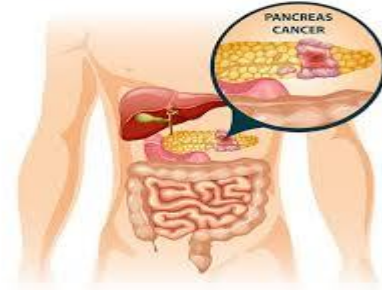


Pancreatic Cancer: A Silent Killer

Monika Kashyap

Associate Professor, Royal School of Nursing, The Assam Royal Global University
Email: [kalitamonika24\[at\]gmail.com](mailto:kalitamonika24[at]gmail.com)

Cancer is a large group of diseases in which there is multiplication growth of abnormal cells within the body. Of all the cancers occurring pancreatic cancer is one which is common but diagnosed at late or complex stage. It is rarely diagnosed at the early stage when the chance of curing the disease is greatest due to which the fatality is also very high. Pancreatic cancer is often referred to as the “silent killer” because it is diagnosed at a later stage. It is the 10th most common cancer in UK with approximately 10, 500 people diagnosed every year.



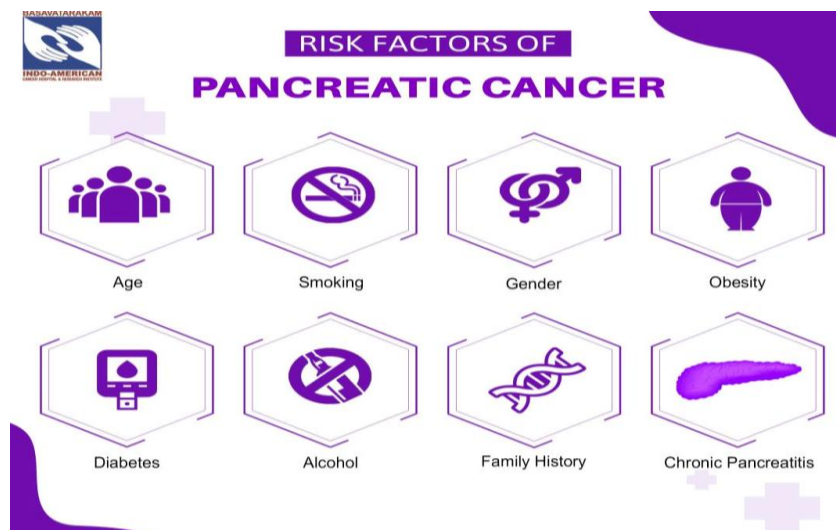
What is pancreatic cancer?

It is a condition in which there is a multiplication of cells in the abnormal fashion within the pancreas.

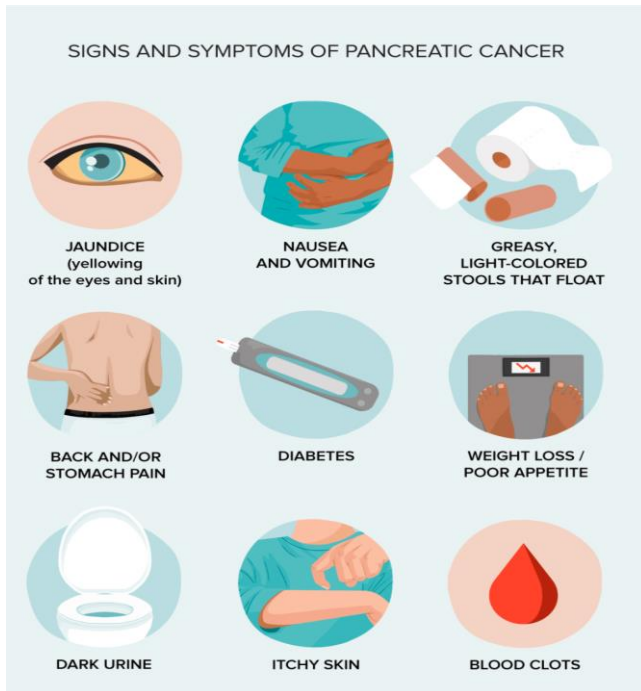
What are the warning signs?

- 1) Yellowish discolouration of skin
- 2) Unexplained weight loss
- 3) Abdominal pain
- 4) Late onset of diabetes

What are the causes and risk factors?



What are the clinical features or sign and symptoms of Pancreatic cancer?



How it can be diagnosed?

- 1) Complete history and physical examination
- 2) Blood tests
- 3) CT Scan
- 4) Endoscopic ultrasound
- 5) PET Scan
- 6) Biopsy
- 7) Genetic testing

How to manage and treat Pancreatic cancer?

1) Surgery:

Surgery can cure pancreatic cancer, but it's not an option for everyone. It can cure for those people who have not spread or metastasied.

- **Surgery for cancers in the pancreatic head.** The Whipple procedure, also called pancreaticoduodenectomy, is an operation to remove the

head of the pancreas. It also involves removing the first part of the small intestine and the bile duct. The remaining organs are rejoined to allow food to move through the digestive system.

- **Surgery for cancers in the body and tail of the pancreas.** Surgery to remove the body and tail of the pancreas is called distal pancreatectomy.
- **Surgery to remove the whole pancreas.** This is called total pancreatectomy where the whole pancreas is removed.

2) Chemotherapy

Uses strong medicines to kill cancer cells. Treatment might involve one chemotherapy medicine or a combination of them. It might be the first treatment used when the first treatment can't be surgery. Chemotherapy also might be given at the same time as radiation therapy.

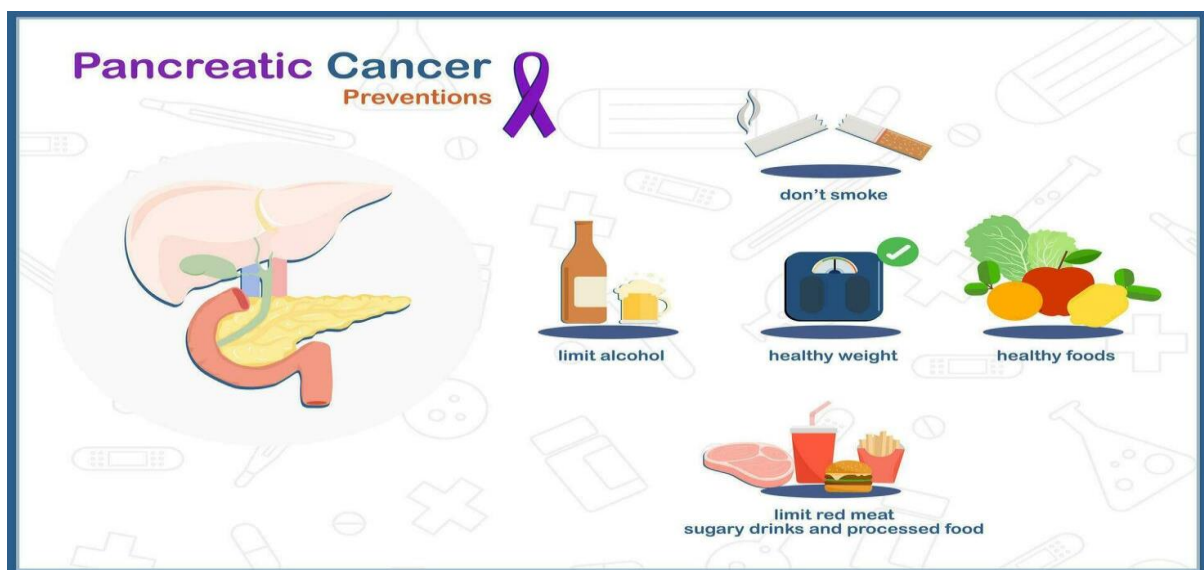
3) Radiation therapy

Uses powerful energy beams to kill cancer cells. The energy can come from X - rays, protons or other sources. Radiation can be used either before or after surgery. It's often done after chemotherapy. Radiation also can be combined with chemotherapy.

- **4. Immunotherapy:** is a treatment with medicine that helps the body's immune system kill cancer cells. Cancer cells survive by hiding from the immune system. Immunotherapy helps the immune system cells find and kill the cancer cells.

How pancreatic cancer can be prevented:

- 1) **Screening of patients:** Screening uses tests to look for signs of pancreatic cancer in people who don't have symptoms. Pancreatic cancer screening might involve imaging tests, such as MRI and ultrasound. These tests are generally repeated every year.
- 2) **Genetic testing for cancer risk:** Genetic testing can find DNA changes that run in families and increase the risk of cancer.
- 3) **Other preventive measures includes:**



Thus it can be concluded that Pancreatic cancer occurs in patients and diagnosis is done at a late stage for which the

fatality of the patients becomes more. Thus effective screening techniques can help in lessening the burden of this

disease. With prompt screening and diagnostic tests the magnitude can be reduced and will help in better prognosis for the people.

References

- [1] <https://www.mayoclinic.org/diseases-conditions/pancreatic-cancer/diagnosis-treatment/drc-20355427>
- [2] <https://pancreaticcanceraction.org/news/blueprint-to-beat-cancer-launched-today/>
- [3] <https://www.vecteezy.com/vector-art/33003243-pancreatic-cancer-prevention-maintain-healthy-weight-healthy-food-dont-smoke-limit-alcohol-reduce-your-intake-of-red-meat-sugary-drink-and-processed-foods>