

# Weight Optimization of Movable Jaw of Rear Vice of Horizontal Band Saw Machine Using Topology Optimization

Prashant H. Patil<sup>1</sup>, Suresh S. Patil<sup>2</sup>

<sup>1,2</sup>Padmabhooshan Vasanttraodada Patil Institute of Technology, Budhgaon, 416034, India

**Abstract:** Horizontal band saw machine is an important machine tool in mechanical workshop. This paper is about Weight reduction of movable jaw of rear vice. Rear vice used for clamping work piece during cutting operation. It has two jaws Fix jaw and movable jaw. Movable jaw attached to hydraulic cylinder which applies force to hold work piece between Reduce weights of components help to minimize load on environmental resources. These efforts for reduction of weight by using topology optimization. Movable jaws has been modeled using solid works First conducted analysis on existing jaws with calculating the forces acting on jaws in order to find out Max. Displacement and stress induced. These analyses were carried using Altair Hyperworks and solver used is optistuct. Again conducted topology optimization with applying manufacturing constrain like minimum member size and single type draw direction. Again prepare cad model based on topology result and carried analysis on optimized model. from the analyzed results, Displacement and stress are lower than existing model. From result it was found that current design is safe also save material, cost of component, Finally we reduced total weight by 25 % of existing model. Topology optimization analysis is carried out in Hyperworks which yielded in weight optimized.

**Keywords:** Horizontal band saw machine, rear vice movable jaw , Hyper works, Optistuct ,Topology optimization

## 1. Introduction

Sawing machine is an important machine tool of mechanical workshop. A sawing machine is a machine tool designed to Cut off bar stock, tubing, pipe, or any metal stock within its Capacity, or to cut sheet stock to desired contours. The sawing Machine functions by bringing a saw blade containing cutting. Teeth in contact with the work piece to be cut, and drawing the cutting teeth through the work piece. The sawing machine is much faster and easier than hand sawing. Sawing machine has two types:

- 1) Power hack saw
- 2) Band saw machine.[8]

Where power hack saw machine uses a reciprocating cutting Action, while band saw uses a continuous band blade for SPM TOOLS, Ichalkaranji is a company of FIE GROUP. This company is leading in manufacturing of Horizontal band saw machine. But due to increase in raw Material cost, processing cost, labour cost causes to increase of total machine cost. Hence Company focusing on to reduce manufacturing cost to maintain good sale in market. So in this project work to selected rear vice for weight optimization of model SPMFCAF 245 by using topology optimization method.[6]

Rear vice used for clamping work piece during cutting operation. Rear vice has two jaws one is fixed jaw and another is movable jaw. Moving jaw attached to hydraulic cylinder. Hydraulic cylinder operated by a hydraulic power pack. Pressure dial gauge shows how much Pressure applying on hydraulic cylinder.[6]

Topology Optimization is defined as finding out the best. Possible material distribution in selected design space with considering the given sets of objective and design constraints. For solving any topology optimization problem have to

specify parameters that are Design Variables, responses, Design objective and design constraints also consideration of manufacturing constraints.

Hence in order to accomplish the objective of weight reduction over existing design, Finite Element Analysis method is used. Since from last decade a powerful FEA packages have proven good to analysis. Hence we are going to use finite element analysis software for weight optimization. In which Hypermesh is pre-processor. Optistuct is solver which now days much famous in industry and Hyperview is Post-processor. After will do FEA analysis of optimized model and check stress, displacement of optimized model do not to exceed magnitude of initial model [1]. Finally we will manufacture casting of optimized design and applying same load on this casting on universal testing machine (UTM) or horizontal band saw machine If jaw (optimized) sustain these load without failure then optimized design validate.

This paper deals with 3D modeling of jaws. Calculation of force, Analysis, optimization, getting IGES model from optistuct (OSsmooth) and Make appropriate change in that model for manufacturing point of view and cross-check value of displacement within range(lower than Initial model ) .finally manufacturing casting validate on universal testing machine or machine.

## 2. Problem Definition

In which Movable jaw of Rear vice is taking for project work. Rear vice jaw has two jaws one is fixed another is movable. Hydraulic cylinder attached to movable jaw which applies force to jaw to clamp the workpiece. Movable jaw's weight is 12.6 kg. Movable are made of ductile iron. Inner diameter of hydraulic cylinder is 80.125mm, while max. Pressure of hydraulic oil on cylinder is 22kg/cm<sup>2</sup> .Maximum

Volume 3 Issue 6, June 2014

[www.ijsr.net](http://www.ijsr.net)

Licensed Under Creative Commons Attribution CC BY

load applying on jaws is 10884N. Objective is to optimize the structural design of movable rear vice-jaw in order to reduce the material cost by reducing weight of Existing movable jaw without reduction in load bearing capacity. [6]

2.2. Objective

The key objective of this effort is to carry out static analysis of movable jaw of rear vice and also perform topology optimization for achieving weight reduction.

- Determinations of the forces acting on movable jaw of rear vice during working conditions.
- Solid modeling of the movable jaw of rear vice.
- Determination of displacement and max. disp. Node number.
- Determination of Von mises stress.
- Topology optimization setup with minimum member Size(8 mm) and single type draw direction.
- Prepare pattern of optimized model
- Manufacture casting
- Take experimental test on optimized model.

3. Methodology

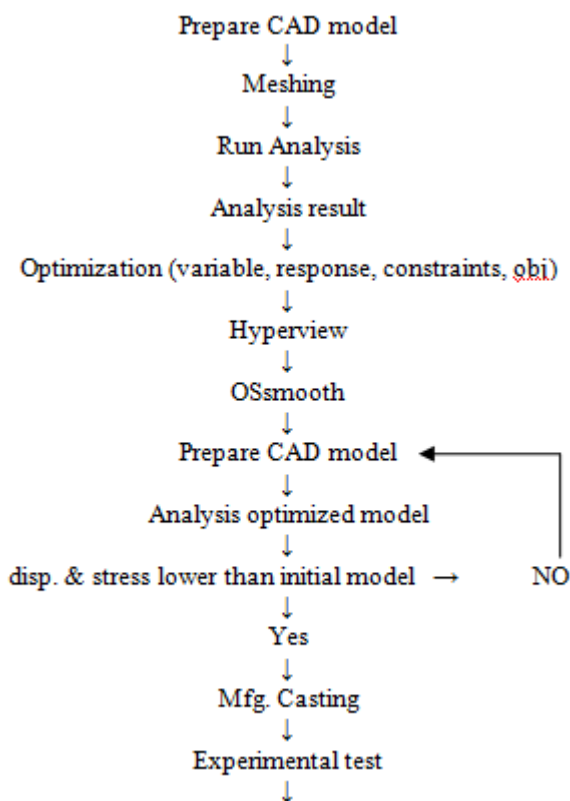


Figure 1: Work flow diagram

In above diagram show that way of project work.[7] In order to proceed with this study various forces acting on Jaw were calculated. CAD model of movable jaw designed in solid works was imported in Hypermesh for geometric cleanup and meshing. Meshed model of movable jaw consist of 30081 nodes and 127954 elements all are 3D Tetramesh (volumemesh).Tetra elements give enhanced result as

compared to other types of elements, therefore the elements used in this analysis is tetra elements.

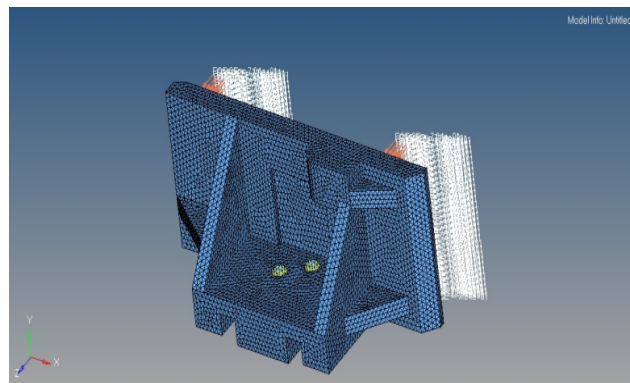


Figure 2: Movable jaw with meshing, loading and boundary Condition.

Ductile iron material was used for movable jaw. Calculated forces and boundary conditions were applied on meshed model in Hypermesh as shown in figure 2. Static analysis was performed by using optistuct. Viewed Result in Hyperview. All specification, material property And result shown in tablel

3.2 Design parameters

1) Forces acting on jaws

Rear vice jaw has two jaws one is fixed another is movable. Hydraulic cylinder attached to movable jaw which applies force to jaw to clamp the work piece. Inner diameter of hydraulic cylinder is 80.125mm, while maximum pressure of hydraulic oil on cylinder is 22kg/cm2. [6]

$P=F/A$

$F=P*A$

$F=22*(3.142*(4.00625)^2)=1109.44 \text{ kg.}$

$F=1109.44*9.81 = 10884 \text{ N}$

Maximum load applying on jaws is 10884N.

Considering factor of safety (F.S.) 1.5 then

$F= 10884*1.5 =16326\text{N.}$

Table 1: Material properties and specification of jaws

Paramete	Description	Movable Jaw
E	Young's Modulus ( Mpa)	170000
NU	Poisson's Ratio	0.275
RHO	Density (kg/m3)	7100
F	Force(N) factor of safety 1.5	16326
M	Wt.of jaw before optimization	12.6 kg

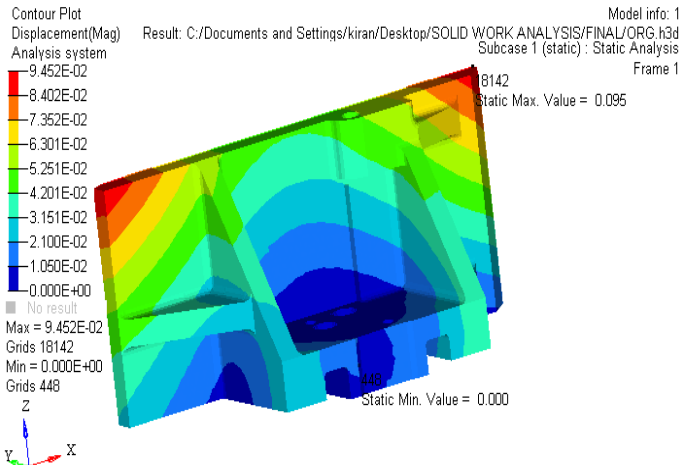
4. Results and Discussions

a) Static analysis

Static analysis was performed by using optistuct solver. From figure3, it is observed that the maximum displacement. Developed is 0.095mm for movable jaw. Stress developed is 78.27 Mpa which is lower than the Yield strength. Hence, design is safe that is the values of maximum stresses are acceptable as compared to yield strength so design constraints For Optimized movable jaw is to maintain displacement value lower than 0.095 mm.

**Table 2:** Analyzed results for movable materials

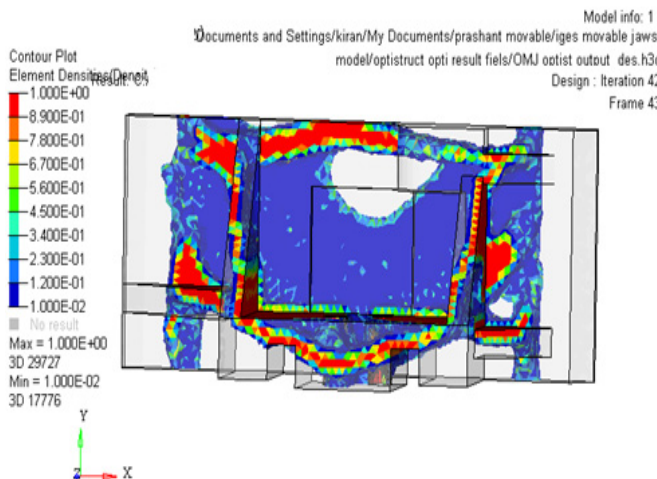
Description	Movable Jaw
Max displacement in mm	0.095 at node 18142
Von Mises stress (Mpa)	78.266



**Figure 3:** Max. Displacement of movable jaw

**b) Topology optimization**

Topology Optimization technique gives an optimum material distribution Within given design space. [7] The design space defined using solid elements. The topology optimization set up in which first is design variable selected as solid and setting up two manufacturing constraints 1. Minimum member size control (8 mm) 2. Draw direction type (single). Design response was volume Fraction, weighted comp., displacement. Optimization design constraints were volfrac for that upper bound 0.030. Displacement constraint was upper bound 0.095 for movable jaw. Finally design objective was Minimum weight compliance. Run optimization by using optistuc Solver. Finally viewed result in hyper view.

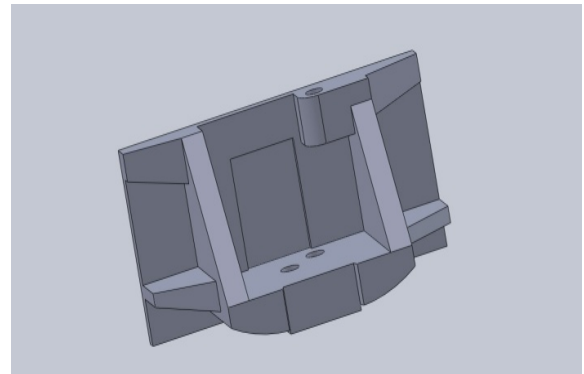


**Figure 4:** Hyper view element densities of movable jaw

Figure 4 shows element density for movable jaw. Optistruct identifies material distribution pattern throughout jaws and remove material from that region in successive iterations based upon set of objectives and constraints. This material removal is given by varying density of each element from 0

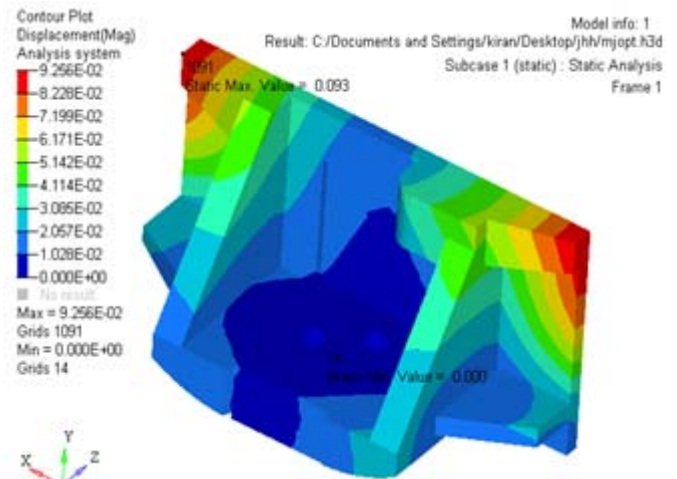
to 1. After number of iterations, when solution converges the density pattern of component a region with lower density indicate that it can be removed without hampering safety of component. So by removing the material from these design space of component objective of reducing weight of component will be fulfilled with all design constraints.

A conceptual design can be imported in a CAD system using an iso-surface generated with OSSmooth, which is part of OptiStruct. This IGES model imported in solid works makes changes as per manufacturing aspect. Figure 5 Shows CAD model of fix and movable jaws resp.



**Figure 5:** CAD model of optimized movable jaw

Again conduct analysis on newly optimized movable jaw model. Setup all meshing, boundary and loading condition. Cross Check that displacement and stress of optimized model do not exceed value Initial model. Figure 5. Shows displacement result of optimized movable jaw. Displacement of optimized movable jaw is 0.093mm (<0.095mm of initial model).



**Figure 6:** Disp. of optimized movable jaw 0.093mm (0.095)

**Table 3:** Analyzed results for movable materials

	Movable jaw <i>before</i> optimized	Movable jaw <i>after</i> optimized
Max.	0.095	0.093
Max. Stress	78.266	69.09
Weight	12.6	9.40

After Check the magnitude of displacement and stress of optimized model has lower than initial model. Then we have



prepared pattern of new Optimized model and finally manufactured casting. Also taken test of optimized movable jaw on actual machine by applying double hydraulic pressure it has been Observed that manufactured optimized model are able sustain these load without failure so this optimized design has validated

**Table 4:** Total weight and cost saving

Design parameter	Movable jaw before optimized
Weight reduced (kg)	12.6-9.40=3.2
Total cost saving/unit	3.2*60=192/-
Total cost saved/year	192 *100 = 19,200/-

## 5. Conclusions

In this project, the forces acting on movable jaw of rear vice of horizontal band saw machine has been calculated with considering factor of safety. CAD model of jaws has been carried out using Solid works software. The static analysis as well as optimization of movable jaws has been carried out in Hyperworks. Finally manufacturing casting validate on machine. From the analyzed results, it is concluded that.

- The values obtained for the maximum displacement and von mises stress of optimized model are lower than existing model.
- Topology optimization generates an optimized material distribution for a set of loads and constraints within a given design space. This Optimization reducing weight, manufacturing cost of component fulfilled with all design constraints..
- Weight optimization of rear vice resulted to 25% of weight reduction than existing model. So that company saves 19,200 per year.
- Though this work we can minimize load on resource's and help to increase productivity and increase sale machine.

## 6. Future Scope

We can apply this weight optimization method to All casting parts of horizontal band saw machine which are over design. So we can minimize total Manufacturing cost of machine and it will better to Increase sale in market.

## References

- [1] Vinayak Kulkarni<sup>1</sup>, Anil Jadhav<sup>2</sup>, P. Basker<sup>3</sup>, "Finite Element Analysis and Topology Optimization of Lower Arm of Double Wishbone Suspension using RADIOSS and OptiStruct," International Journal of Science and Research (IJSR), Volume 3 Issue 5, May 2014.
- [2] Muni Prabakaran and V.Amarnath ,'Structural Optimization of 5Ton Hydraulic Press And Scrap Baling Press for Cost Reduction by Topology'. Published in "International Journal of Modeling and Optimization", Vol. 1, No. 3, August 2011.
- [3] Vivek Zolekar, Dr. L.N. Wankhade, "Finite Element Analysis and Optimization of I.C. Engine Piston Using RADIOSS and OptiStruct",altair technology conference 2013 india.
- [4] Rinkle Garg, Sunil Baghla 'Finite Element Analysis and Optimization of Crankshaft Design', Published in

"International Journal of Engineering and Management Research, Vol.-2, Issue-6, December 2012, ISSN No.: 2250-0758, Pages: 26-31.

- [5] Malleswara Swami<sup>1</sup>, K.Sunil Ratna Kumar<sup>2</sup>, "Design and structural analysis of CNC vertical milling machines", International Journal of Advanced Engineering Technology, IJAET/Vol.III/ Issue IV/Oct.-Dec. 2012/97-100
- [6] SPM tools band saw product manual.
- [7] Altair hyperworks.11 user Manual.
- [8] Pdf on SAWING MACHINES GENERAL, uhv.cheme.cmu.edu/procedures/machining/ch6.pdf
- [9] Tushar M. Patel, Dr. M. G. Bhatt, Harshad K. Patel. 'Parametric Optimization of Eicher 11.10 Chassis Frame for Weight Reduction Using FEA-DOE Hybrid Modeling', published in "International Journal of IOSR Journal of Mechanical and Civil Engineering (IOSR-JMCE)", e-ISSN: 2278-1684,p-ISSN: 2320-334X, Volume 6, Issue 2 (Mar. - Apr. 2013), PP 92-100.
- [10] Waqas Saleem, Fan Yuqing, Wang Yunqiao, "Application of Topology Optimization and Manufacturing Simulations - A new trend in design of Aircraft components", Proceedings of the International Multi-Conference of Engineers and Computer Scientists 2008 Vol II IMECS 2008, 19-21 March, 2008, Hong Kong.

## Author Profile



**Prashant H. Patil** received degrees in Mechanical Engineering from Shivaji University, Kolhapur.



**Suresh S. Patil** received the B.E. and M.E.-Design degrees in Mechanical Engineering from Shivaji University, Kolhapur, India